

LIVING ON CAMPUS

Welcome Home to Nichols College



Office of Residence Life

Nichols College

508-213-2092

reslife@nichols.edu

<https://reslife.nichols.edu/>

Fels Student Center
Student Life Suite 301

SHAMIE HALL

First-Year Residential Hall

Shamie Hall primarily houses first-year students in triple rooms with private bathrooms, offering a comfortable and convenient living experience. Each room is furnished and air-conditioned, with elevator access for added ease.

Students can unwind in the 2nd-floor Common Lounge, featuring a pool table and big-screen TVs, or take advantage of study spaces, lounges, and laundry rooms on each floor. Outdoor amenities include a wiffle ball field, half basketball court, and patio.

More than just a residence, Shamie Hall fosters a vibrant community with RAs and campus partners hosting events that help students connect, grow, and feel at home.



Upperclassmen Residential Halls

Budleigh Hall

Located in front of the Athletic Center, Budleigh Hall features classic architecture. This co-ed building houses 75 students in mostly double rooms, with a few singles. Amenities include a study lounge, common bathrooms, vending machines, and a laundry room.

Center Hall

Between Remillard and Budleigh, next to North Hall, Center Hall is a single-story, single-gender residence hall. It offers double rooms, two quads, a common bathroom, lounge, and laundry room.

Olsen Hall

A green, co-ed residence hall with recycled flooring, geothermal heating, low VOC paint, and Energy Star appliances. Olsen houses 65 students in double rooms and includes common bathrooms, a lounge, and a laundry room.

North Hall

Overlooking the volleyball and tennis courts, North Hall is a single-story, single-gender residence hall. It features double rooms, common bathrooms, a lounge, and a laundry room.

Remillard Hall

This four-story, suite-style residence hall accommodates 215 returning students. Suites consist of triple rooms with shared baths. Amenities include a study lounges, vending machines, and a laundry room.

Kuppenheimer Hall

Next to Shamie Hall, Kuppenheimer is a co-ed residence with four-person suites. Each suite has two double rooms, a shared bathroom, and a common living area. The building features an area kitchen, laundry room, vending machines, and recycled flooring.

Copper Beech I and II

Our Copper Beech halls provide apartment-style living for our returning students. Each building houses 60 students in a combination of 2 bedroom/1 bath and 4 bedroom/2 bath suites, each with a full kitchen and living area.



The Residential Student Experience

My living experience on campus was so impactful, because some of my favorite memories in college were the "late night conversations" sitting in the living room of a Copper Beech apartment, or the last-minute decisions to go out, or do something with my roommates and teammates. You just don't get those experiences living off campus. My best advice to incoming students who will be sharing a space, or living away for the first time is to OVER communicate. It is best to set the clearest boundaries and expectations from the jump, rather than trying to problem solve your way through them later down the line. - **Mallory Gilmore '25**

Living on campus was such a meaningful experience for me because I truly felt like I had a purpose here. I made it my goal not just to grow and learn for myself but to step out and create opportunities that I wouldn't have had if I had stayed in my room. Meeting new people, building connections, and feeling the genuine support from faculty and staff made all the difference. It was empowering to know that I had a community that wanted to see me succeed. Beyond the classroom, I found so many valuable outlets for learning and personal growth, which made my time on campus even more impactful. - **Alisha Masson '26**

From on-campus events, such as bingo nights and basketball games, to hanging out with your friends after class, you truly grow to love campus life. I find ways to get involved across campus to not only meet people but find ways to contribute to the Nichols community. My advice is to make a conscience effort to step outside your comfort zone. Although it seems cliché, I met my best friends from simply approaching a group of students on the quad. Everyone is looking to make connections, so be the one to say "hello". - **Maya Orbegozo '27**



FREQUENTLY ASKED QUESTIONS

What is provided in the Shamie Hall room?

- A single bed, twin mattress-extra long (36"x80"), closet/wardrobe, desk, chair, shades/blinds, and shower curtains.

Can I pick my roommates?

- Students may request specific people to live with. The Office of Residence Life will work to honor that request as long as all roommates are matched together and meet the requirements of the housing agreement.

Can I bring a car to campus my first-year?

- Yes, all students are able to have a vehicle on campus if they register it with Public Safety.

Will we have laundry facilities?

- All residence halls are equipped with washing machines and dryers. There is no cost associated with these machines. Be sure to bring your own laundry supplies, detergent, dryer sheets, etc.

What items are not permitted on campus?

- Pets, except fish in no greater than a 10 gallon tank, halogen lamps, candles and incense, space heater, air conditioners, ceiling fan, any cooking element with an exposed coil (hot plates, toaster oven, etc.), and any additional items outlined in the Student Code of Conduct.

Are there staff in the residence halls?

- Our live-in staff is made up of both student Resident Assistants (RAs) and full-time professional Area Coordinators (ACs). Our staff and policies are in place to strive to make our residence halls safe, convenient, and welcoming.

Does the campus have security?

- Public Safety is staffed 24/7, 365 days a year. They assist with emergency response, safety and prevention, and parking on campus.

Is Shamie Hall co-ed community living?

- Shamie Hall is a co-ed building with gender-neutral floors. Students have the option to choose either a single-gender or gender-neutral room. Each room accommodates three residents and includes a private bathroom that is shared only among the assigned roommates.

More FAQs can be found on the Residence Life hub webpage.

Living On Campus Essentials!

Room Essentials

- Refrigerator (no larger than 4 cubic feet)
- Microwave (1 per room)
- Coffee maker
- Standing or box fan
- Plates, cups, utensils
- Paper towels
- Small trash bags
- Room decor
- Dish detergent
- Bed raisers
- Cleaning essentials
- Vacuum

Bedding

- Sheets (twin extra long)
- Blankets
- Mattress topper
- Comforters
- Pillows

Laundry

- Clothes hangers
- Laundry detergent
- Dryer sheets
- Steamer
- Business professional attire

Desk/School Supplies

- Calendar
- Desk Lamp
- Folders
- Notebooks
- Pens/pencils
- Desk organizers

Devices & Electronics

- Laptop
- Chargers
- Headphones
- Surge protector
- Television
- Gaming devices
- Alarm clock

Important Documents

- Drivers license
- Social security card
- Birth certificate or passport
- Vaccination card
- Medical insurance card
- F-1 Student Visa and I-20 (international students)

Bathroom/ Toiletries

- Toilet paper
- Bath towels/ face cloths
- Bathrobe
- Shower shoes/flip flops
- Shower caddy
- Razor/shaving cream
- Shampoo/conditioner
- Dental care products
- Deodorant
- Tissues
- Cosmetics & makeup
- Hair dryer & brush
- Cleaning supplies

Medical Supplies

- First aid kit
- Band-aids
- Prescription medication
- Pain reliever
- Thermometer
- Contact solutions
- Eye drops
- Cough drops

ITEMS NOT PERMITTED ON CAMPUS

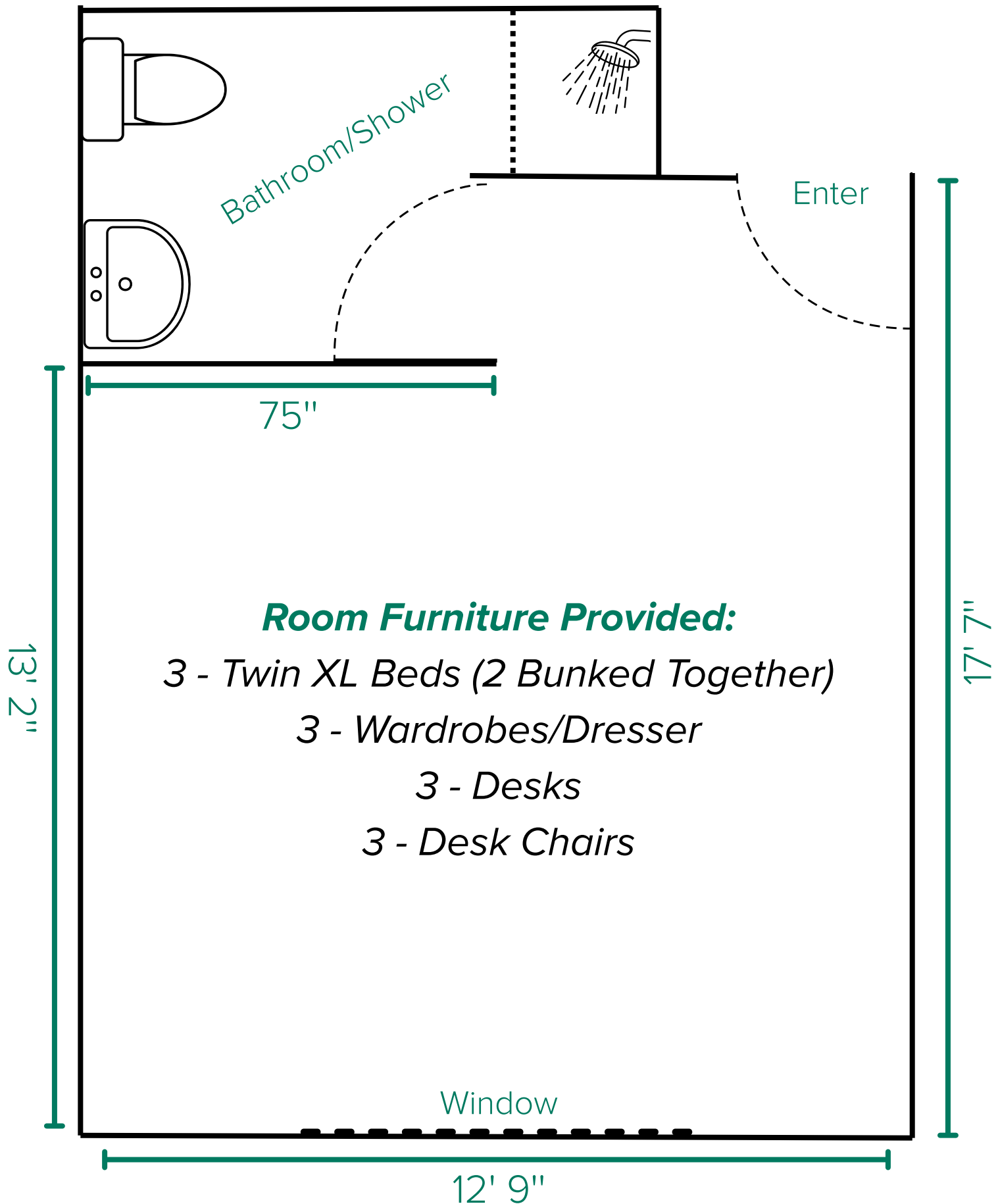


- Candles and incense
- Halogen lamps
- Toaster or any cooking element with an exposed coil (hot plates, toaster oven, etc.)
- Space heater
- Animals, except fish in no greater than a 10 gallon tank
- Alcohol or drug paraphernalia
- Weapons
- Unapproved furniture
- Personal shower heads
- Any items outlined in the Student Code of Conduct



SHAMIE HALL - Standard Triple Room

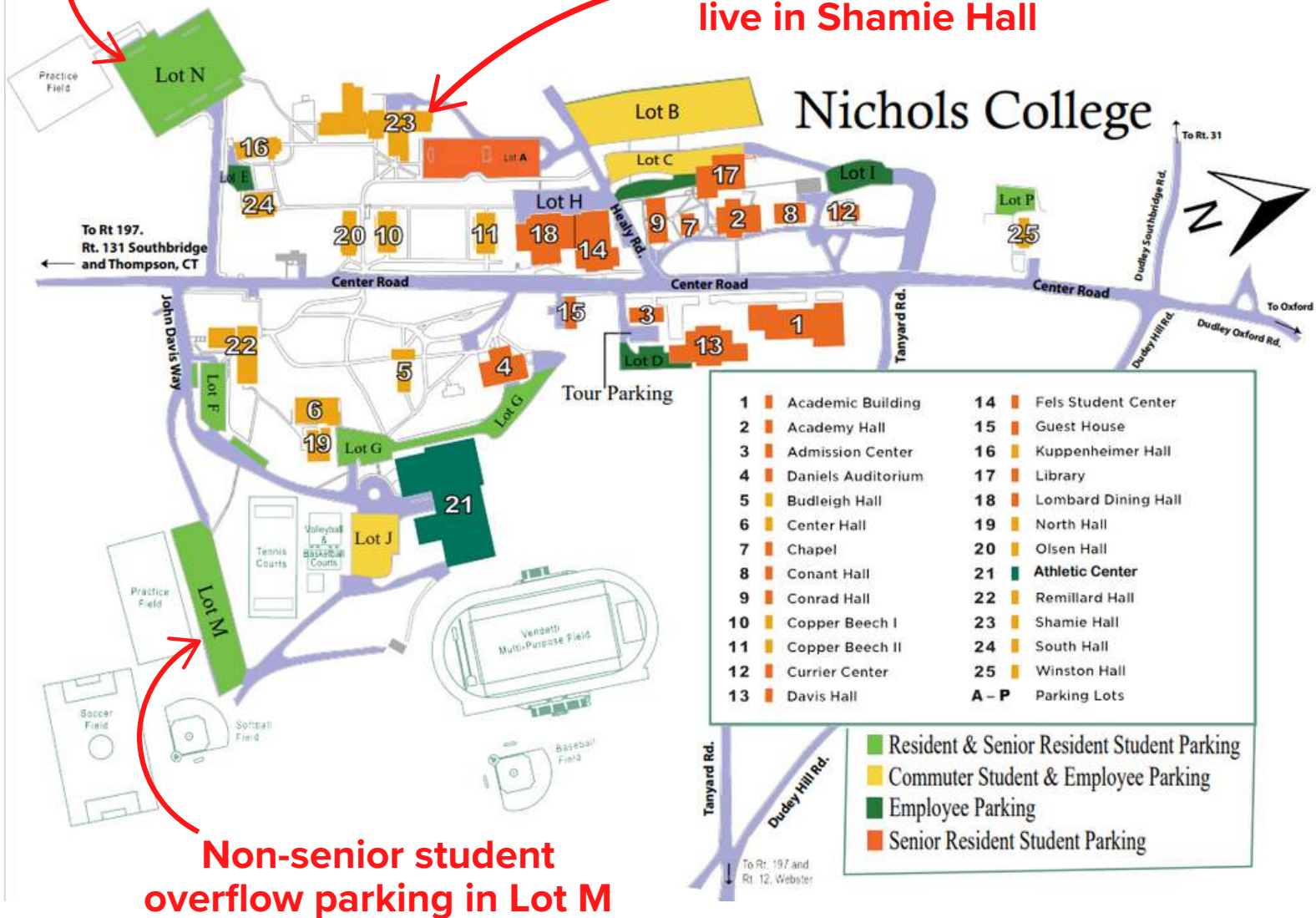
(not to exact scale - dimensions are accurate)



RESIDENTIAL PARKING 101

**Non-senior students
park in Lot N**

**First-year students
live in Shamie Hall**

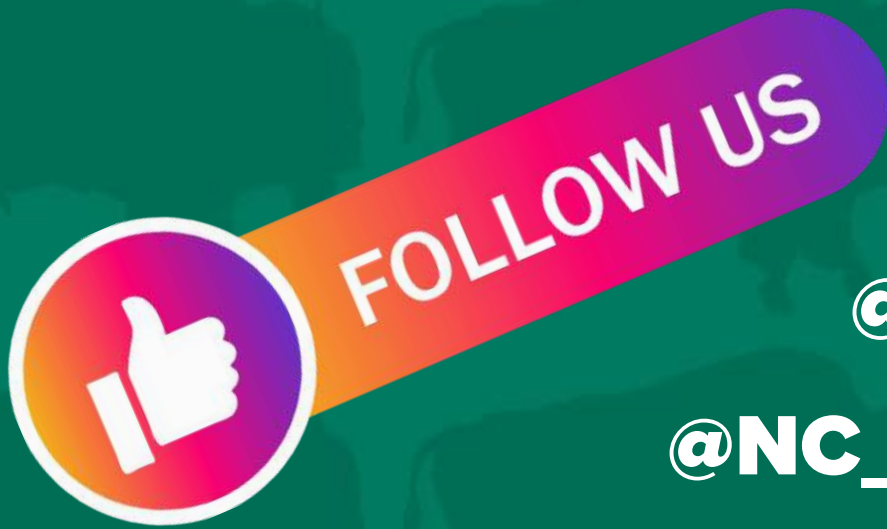


Residential student parking is available within designated areas.

All vehicles must be registered with the Public Safety Office before parking on campus.

Parking decals for the academic year are available for a set fee.

More information on parking and parking decals can be found on the Public Safety hub webpage.



@NC_CAB

@NICHOLSSGA

@NC_CAMPUSREC

@NCBISONSHUTTLE

@NC_STUDENT_LIFE

@NC_RESIDENCELIFE

@NC_STUDENTBELONGING



